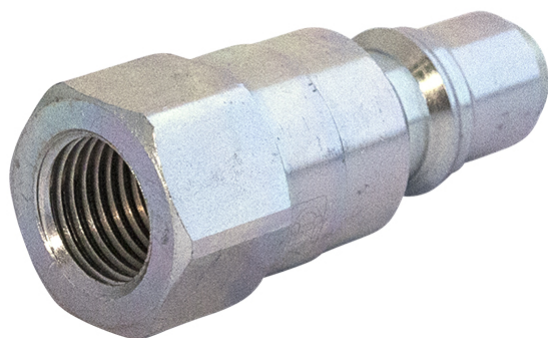


Quick release series T



Product group 526
Valve
Eliminator
Connected length (mm) 108
Security lock
Bulkhead
Locking sleeve

	Working pressure (MPa)	Thread	Dimension (Inch)	Weight (kg)
55520204	45	G 1/4" Female	1/4"	0.05
55520206	35	G 3/8" Female	3/8"	0.06
55520208	30	G 1/2" Female	1/2"	0.1
55520212	28	G 3/4" Female	3/4"	0.19
55520216	25	G 1" Female	1"	0.36

