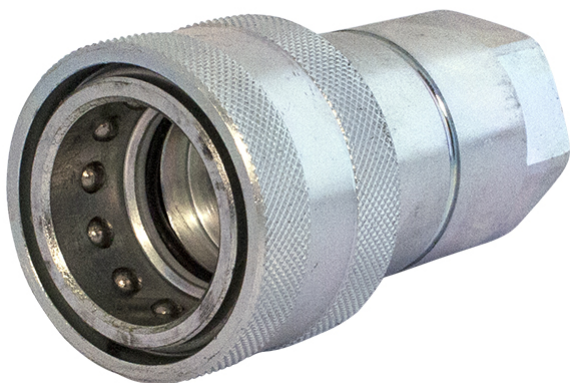


# FASTER NV



**Product group** 520  
**Connected length (mm)** 166  
**Security lock**  
**Bulkhead**  
**Locking sleeve**  
**Valve**  
**Eliminator**

	Working pressure (MPa)	Thread	Dimension (Inch)	Weight (kg)
55580304	35	G 1/4" Female	1/4"	0.1
55580306	30	G 3/8" Female	3/8"	0.19
55580308	30	G 1/2" Female	1/2"	0.25
55580312	25	G 3/4" Female	3/4"	0.5
55580316	23	G 1" Female	1"	0.82
55580320	22	G 1 1/4" Female	1 1/4"	1.45
55580324	18	G 1 1/2" Female	1 1/2"	2.38
55580332	13	G 2" Female	2"	4.78

