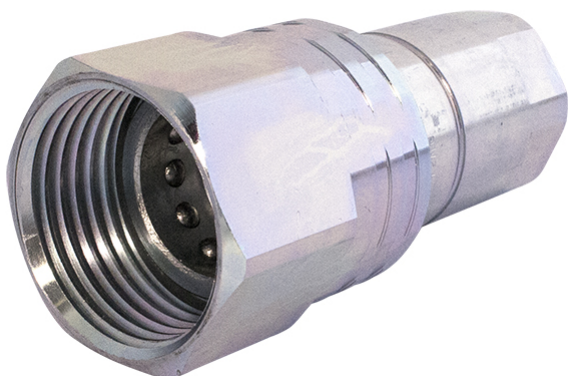


# Faster series VV



**Product group** 520  
**Connected length (mm)** 132  
**Locking sleeve**  
**Security lock**  
**Bulkhead**  
**Valve**  
**Eliminator**

	Working pressure (MPa)	Thread	Dimension (Inch)	Weight (kg)
<b>55582304</b>	35	G 1/4" Female	1/4"	0.12
<b>55582306</b>	30	G 3/8" Female	3/8"	0.23
<b>55582308</b>	30	G 1/2" Female	1/2"	0.31
<b>55582312</b>	25	G 3/4" Female	3/4"	0.69
<b>55582316</b>	23	G 1" Female	1"	0.96

